



MOTHER LODE

CHAMBER OF MINES OF EASTERN BRITISH COLUMBIA

A non-profit bureau of information providing authentic, reliable data to the
General public and the mining industry of Eastern British Columbia

215 Hall Street, Nelson, B.C. V1L 5X4 Phone: (250) 352-5242

chamberofmines@netidea.com

NEWSLETTER

Note: The views of contributors to this newsletter do not necessarily reflect the views of the Chamber

We will be hosting our annual Christmas Party on December 13th, 2019 at the Chamber. There will be an open house all day with snacks and beverages so if you haven't been in for awhile this would be a great time to do so. We will then be serving adult beverages after 5:00PM along with snacks. If you wish to donate a dish for the event please contact us at the Chamber and we appreciate all other donations or sponsorships.



We have been receiving more and more requests for schools to come to the Chamber for a visit to learn about exploration, history and the importance of minerals in our daily lives.

We had a total of 8 classes come through in November. The classes were of different grades ranging from grade 1 – 6 from the Nelson Christian Community School and South Nelson Elementary School.

We are looking forward to hosting the Grade 3 and 4 class of South Nelson Elementary School in December.

If you would like to volunteer some time to assist with the class please contact us at the Chamber.

MINING: GOOD NEIGHBOUR AND PROVIDER TO THE WORLD

WWW.CMEBC.COM



Explorex Announces Acquisition of Bonanza Mountain Gold Project in Historic Knight's Mining Camp, Grand Forks, BC

Explorex Resources Inc. is pleased to announce the Company has acquired a 100% interest in the 803 hectare high-grade gold and copper Bonanza Mountain project ("Bonanza Mountain" or "Project"), through a combination of staking and a sale and purchase agreement, in the historic Knight's Mining Camp, Grand Forks area, BC.

Bonanza Mountain Project Description

The Bonanza Mountain property consists of three claims totalling 803 hectares, is readily road accessible and is situated approximately 20 km due north of Grand Forks, BC, on the east slope of the Granby River. The Project encompasses the historic Knight's Camp, centered on the Bonanza, Mountain View, Colorado and Nevada lapsed Crown Grants ("Bonanza Crown Grants") on what is locally known as Bonanza Mountain.

Bonanza Mountain was the scene of significant exploration and development activity over a short period from the late 1800s through to the early 1900s. Historic details of the activities have been sourced from local newspapers from the period, original Crown Grant documents, Annual Reports to the Minister of Mines, and the online GATOR system (a database registry of Crown land records for British Columbia).

The first mention of high grade gold at Bonanza Mountain was reported on July 20, 1896 by the Spokane Chronicle. The development of a 50 foot shaft centered on the discovery followed with the Grand Forks Miner reporting on January 16, 1897 that the owners, "...are now working on the Bonanza property in Knight's Camp. The [recovered material] increasing in value as they sink."

This was not the only discovery. The Midway Advance reported on April 26, 1897 that, "...numerous veins of iron and copper sulphide outcrop [on the Bonanza group of claims], from a few feet to ten feet in width..." and returned high grade gold and copper in assay*.

By 1901, multiple shafts and tunnels were developed on the Bonanza Crown Grants with associated drifting and open cuts (Annual Report to the Minister of Mines). No further work was reported on the Bonanza Crown Grants after 1901 and the abrupt absence from the historical record remains unexplained.

"The Bonanza Mountain Project warranted significant exploration and development activity at the turn of the 19th century, but then disappeared from the historic record. This has provided Explorex the opportunity to acquire a recognised high grade gold and copper prospect in a well known gold mining camp quite economically," states Mike Sieb, President.

<https://www.newsfilecorp.com>



October 30, 2019

Eagle Graphite and Graphene Leaders Canada Announce Letter of Intent for Supply Agreement



Graphene Leaders Canada Inc. ("GLC") and Eagle Graphite ("Eagle") are pleased to announce the signing of a non-binding Letter of Intent between the companies. The Letter of Intent is the culmination of a series of successful trials of Eagle's flake graphite for purposes of producing GLC's highly advanced graphene formulations.

GLC and Eagle have agreed to immediately commence preparation of a Definitive Supply Agreement, with key aspects reflecting the following objectives:

- The Supply Agreement will span a term of at least five years;
- Eagle shall make all reasonable efforts to ensure an uninterrupted supply of graphite of exceptional quality to meet GLC's stringent requirements;
- GLC shall purchase graphite exclusively from Eagle, subject to cost and availability of material, for as long as Eagle continues to supply the quantities required meeting GLC specifications;
- The quantity and quality specifications and cost will be established, and subsequently reviewed on an ongoing basis.

Eagle and GLC intend to enter into the Definitive Supply Agreement no later than December 1, 2019.

Eagle Graphite advises that a decision to enter into production would not be based on a feasibility study of minerals reserves demonstrating economic and technical viability. Readers are cautioned that production may not be economically feasible and historically these projects have a much higher risk of economic or technical failure.

Jamie Deith, President & CEO of Eagle Graphite, added, "We are thrilled to see GLC's commercial success to date, and delighted to be considered as the exclusive supplier of premium quality graphite to GLC. Graphene-related applications hold the potential to positively impact countless aspects of our daily lives, and we take pride in being able to include graphene among the leading-edge applications for which our graphite is suitable."

Donna Mandau, President & CEO for Graphene Leaders Canada said, "As an international leader in graphene production and application solutions, GLC requires the highest quality graphite for use in its

MINING: GOOD NEIGHBOUR AND PROVIDER TO THE WORLD

WWW.CMEBC.COM

production processes. Eagle Graphite is the premier Western Canadian graphite producer and we are excited to partner with them as our supplier of this essential raw material.”

Upcoming material purchases will be used to support GLC’s numerous coatings projects, including its naval vessel anti-corrosion coating, as well as its GLC+ Protective Coating for Metal Surfaces which is being introduced to the market this fall.

About Graphene Leaders Canada Inc.

Graphene Leaders Canada (GLC) Inc. is a private Canadian technology company producing high quality, high purity graphene nanomaterials which function as a platform technology with the ability to add value across numerous applications. GLC is focused to work with industry to develop solutions by integrating the graphene to develop new innovative and first-to-market products. GLC is focused in the environment-water and coatings markets. GLC is now commercializing their GLC+ Protective Coating for Metal Surfaces offering a near 60% improvement to wear-abrasion resistance and improving hardness, lubricity and adhesion properties. This disruptive improvement to the coating demonstrates GLC’s material science expertise to develop graphene nanotechnology products and solutions with the focus towards innovation and diversification. GLC’s tag line is “Making Great Products Even Greater”.

<https://www.eaglegraphite.com>



MINING: GOOD NEIGHBOUR AND PROVIDER TO THE WORLD

WWW.CMEBC.COM



Golden Dawn Receives Exploration Permit for Lexington Area

Golden Dawn Minerals Inc. announces that it has received its multi-year exploration permit for the Lexington property in Greenwood, B.C after payment of the required reclamation bond.

The new five-year area-based exploration permit is for ground geophysics and surface drilling on the Lexington group of claims held by 1086359 BC Ltd., a subsidiary of Golden Dawn Minerals Inc. The Lexington group covers 2,020 ha. The permit will allow exploration along a 4 km trend of favorable host rocks that stretches northwest from the border with Washington State. This favorable corridor includes the current Lexington-Grenoble mine project as well as other historic mines and prospects, with several historic drill holes that intersected copper-gold mineralization like that exposed within the Lexington mine (See map).



Map showing Lexington mine area, past producing mines and Cu-Au drill intercepts.

The company is now permitted to conduct brownfields exploration drilling to expand the Lexington deposit and search for additional resources nearby within the mineralized corridor.

In the meantime, Golden Dawn's Lexington mine and Greenwood processing facility remain on care and maintenance.

<https://goldendawnminerals.com>

MINING: GOOD NEIGHBOUR AND PROVIDER TO THE WORLD

WWW.CMEBC.COM

Chamber report by Brad Gretchev:

November has been non-stop action at the Chamber. Not just from all of the school classes coming though but with visitors from all over the world.

We were happy to host Rob Morrison our new MP for our riding. It was great timing as we had a class visiting and they got to learn about how our Government works.

Members of the Chamber got a chance to attend the Minerals South 2019 Conference and Tradeshow hosted by our Sister Chamber in Cranbrook and participated in the Permitting and Bonding workshop. Below are links to the new “explore by location” website which is a new powerful one-stop site to figure out what 3rd party interest overlap with your NoW AOI, complete with summary reports (with hot links) and detailed reports. As well as the AME power point presentation.

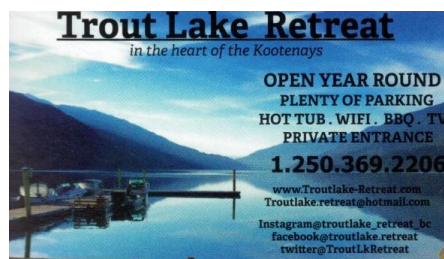
<https://portal.nrs.gov.bc.ca/web/client/explore>

http://cmebc.com/wp-content/uploads/2019/11/MinSouth-2019-NoW-workshop-ppt_final.pdf

Take a look at information update No. 38 (Interim Guidance) on permissible activities without a mines act permit and let us know your thoughts.

<https://www2.gov.bc.ca/assets/gov/farming-natural-resources-and-industry/mineral-exploration-mining/documents/mineral-titles/notices-mineral-placer-titles/information-updates/infoupdate38.pdf>

Remember to come down to the Chamber December 13th, 2019 for the festivities!!



MINING: GOOD NEIGHBOUR AND PROVIDER TO THE WORLD
WWW.CMEBC.COM



Apex Resources Intersects Visible Gold in Initial Drilling at Ore Hill

Apex Resources Inc. is pleased to report that visible gold has been observed in the initial two diamond drill holes completed at its Ore Hill gold project in southeastern British Columbia (see photos). The presence of visible gold in drill core is considered very favorable, but does not assure potential for high laboratory assay grades.

Historical mining on the Ore Hill property focused on narrow, high grade, northeast trending quartz veins. Recent exploration shows gold mineralization also occurs along a north trending structural zone. The Ore Hill drill program is targeting this important new style of gold mineralization along a 1,500 metre long gold soil anomaly.

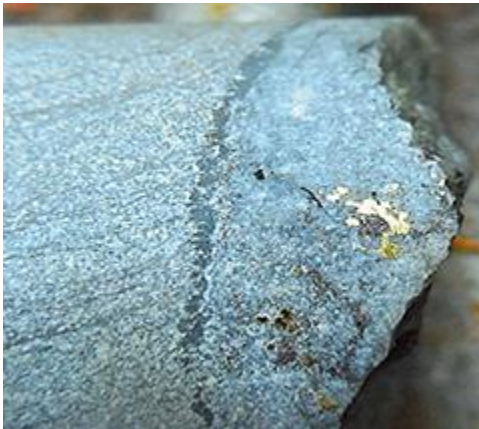
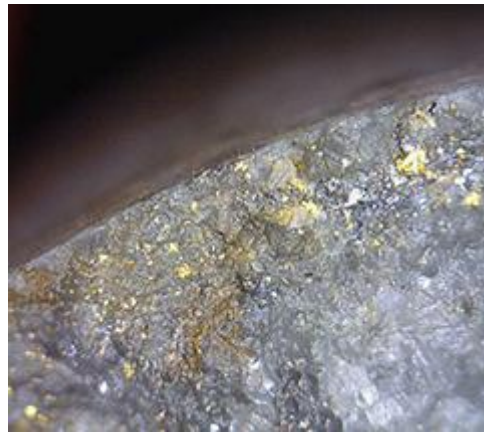
Four drill sites were initially selected to test the soil anomaly north of the historic Summit Gold mine. Drilling commenced September 30th but was suspended in mid-October due to un-seasonally heavy snow conditions. The program completed 437.35 metres of drilling in two holes. The core is presently being logged and split at the company's secure core storage facility in Salmo, BC. Assays will be reported when analyses are complete in about 4 weeks.

The two planned but untested drill targets will be explored as soon as weather conditions allow access. The Company has a multi-year permit in place to allow for an expanded drill program.

The 2,000 hectare Ore Hill Property is located in the historic Sheep Creek gold camp just 5 km east of Apex's historic Jersey-Emerald lead, zinc and tungsten mines. The property covers the former Ore Hill, Summit and Bonanza gold mines. See website and previous releases for more information on these projects.

Rock chip sampling completed by Margaux Resources in 2017 and 2018 returned a number of high grade gold assays, including 119 g/t and 105 g/t gold over a 950 m by 150 m area along the trace of the gold soil anomaly (see Margaux release of Oct 29, 2019). The results suggest that this recently identified mineralization may represent an extensive mineralizing system with significant size and strength.






Examples of visible gold seen in drill core at Ore Hill 2019. Drill core is approximately 50mm (2 inches) in diameter.

www.apxresources.com

Exploring in British Columbia?
We have you covered with
High-Quality Analysis and Rapid Turnaround.



Full Assay Laboratory in Kamloops, Accredited to ISO 17025

For further information or quote requests, please contact:
Rob Hoffman, Western Canada Regional Manager
rob.hoffman@actlabs.com cell: +1.250.320.1186
Brent Mawdsley, Business Development Manager
BrentMawdsley@actlabs.com cell: +1.604.202.4766

Actlabs
www.actlabs.com

MINING: GOOD NEIGHBOUR AND PROVIDER TO THE WORLD
WWW.CMEBC.COM



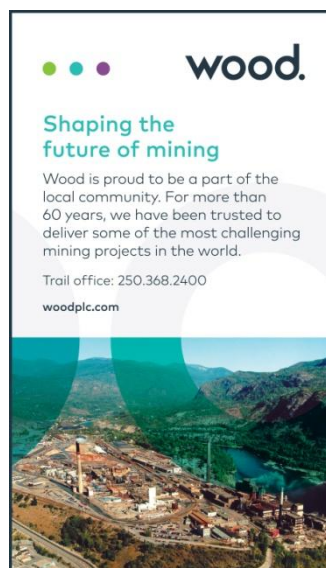
November 7, 2019

Ximen Mining Pursues Greener Path to Development of Kenville Gold Mine, Nelson BC Canada



When you think about the Kenville Gold Mine
here are some things you need to consider:

How is our underground gold mine going to come about? It will be developed by focusing on being clean, green, and making a small environmental footprint. We will fully utilize the opportunities that mother nature has provided us to make this operation electric and pneumatic, while creating high-impact, real meaningful jobs for the local economy. In case you never heard it before, bigger is not always better. We believe we can be highly profitable and manage the fine line of creating impactful jobs while simultaneously being environmentally responsible.



A FEW KEY POINTS FOR CONSIDERATION

1. We own our surface rights and our underground rights.
2. We own all our own brand-new underground equipment and all our underground drilling equipment.
3. We own our transformers, compressors and power lines.
4. We have our own housing on-site for our mining staff.
5. Local labour force surrounds us and is only minutes away.
6. Our roads and buildings are constructed and installed and gated for security.
7. The road to the site is called the Kenville Mine Road, just off BC highway 3A, 10 minutes outside Nelson.
8. Our main power source is electric, supplied off the Kootenay hydro-electric generation system, and just recently installed at site and ready to go.
9. Our internal underground lighting system will be generated using low-voltage, long-life LED lighting powered by the natural flow of the mountain water.
10. Our underground drilling and development equipment is pneumatic, powered from an air compression drawing electricity generated from the Kootenay River.
11. The rock we are mining is some of the most composite competent rock you can mine in and is clean and acid neutralizing, and desired by many for aggregate. Engineered concrete, slope stabilization, engineered backfill, road topping, and landscaping.
12. The run-off water from the mountain that disperses out the mine portal is some of the best drinking water in the province and provides an excellent power source for both surface and undersurface activities.
13. We have a digital drilling database going back to the 1940's and including the most recent four years of drilling that was supervised by the current mine manager.
14. We are installing our own site management and security system utilizing solar and electric power.



MINING: GOOD NEIGHBOUR AND PROVIDER TO THE WORLD

WWW.CMEBC.COM

We want the questions and we take on the challenge.

We are working to make the Kenville Gold Mine as green as can be, from top to bottom. Mother Nature is cooperating and playing a major role in helping us to achieve our goals; the waste rock is acid neutralizing, the natural flow of water from the existing portal that feeds the springs is some of the best drinking water in the province. We are taking advantage of all that Mother Nature has provided.

How can we make such claims – we have hired what we believe are the best firms at our disposal to verify and clarify our claims. Massey Environmental has done our baseline water studies, SRK Consulting has done our Acid Rock drainage plan and testing. Don't let the term "Acid Rock" mislead you – our waste rock that we are intending to mine is actually acid neutralizing and is highly sought after as composite rock for dam filtration among many other positive environmental usages. To make sure we are on the right path we had Paul Hughes and Associates complete the engineering ground control plan for the new decline. Finally, and most importantly, the man who is overseeing all this work is Lloyd Penner. The last miner to take our ore out of the Kenville mine in 1992 and the one who spent four years drilling off what we consider to be the extension of the original Kenville Gold Mine, gold veins.

Do we have a plan you ask? Yes, and its laser-focused. Our target is to develop the mine to extract 125 tonnes per day of material grading 15 grams per tonne (1/2 ounce per ton) gold. The initial step is to develop the new access decline. During that development, underground diamond drilling will in-fill areas where surface drilling has already intersected significant gold in quartz veins. Potential mining blocks can then be defined. The aim is to first develop and produce a bulk sample and then, assuming success, proceed into full mine development.

Processing and recovery of gold would be done off-site. A metallurgical study has already been started to fully characterize the mineralized feed and product materials.

<https://www.ximenminingcorp.com>



MINING: GOOD NEIGHBOUR AND PROVIDER TO THE WORLD
WWW.CMEBC.COM

**WE RELY ON THE SUPPORT OF OUR MEMBERS.
PLEASE REMEMBER TO RENEW YOUR MEMBERSHIP.**



215 HALL STREET NELSON, BC V1L 5X4
PHONE (250) 352-5242

Membership Application form
For the Year 2019

YOUR SUPPORT IS ESSENTIAL TO THE LIFE OF THE CHAMBER
PLEASE COMPLETE SO THAT WE CAN UPDATE OUR FILES.

NAME: _____ COMPANY: _____

STREET ADDRESS: _____

CITY/PROVINCE/POSTAL CODE: _____

PHONE: AREA CODE: _____ PHONE: _____ FAX: _____

Email: _____

INDIVIDUAL MEMBERSHIP \$ 40.00 _____

SMALL CORP MEMBERSHIP (2-10 EMPLOYEES) \$100.00 _____

SMALL CORP MEMBERSHIP (11-30 EMPLOYEES) \$200.00 _____

MEDIUM CORP MEMBERSHIP (31-50 EMPLOYEES) \$300.00 _____

LARGE CORP MEMBERSHIP (51+ EMPLOYEES) \$500.00 _____

Date..... \$ _____

THANKS FOR YOUR SUPPORT ----- Chamber of Mines of Eastern BC

MINING: GOOD NEIGHBOUR AND PROVIDER TO THE WORLD
WWW.CMEBC.COM