



MOTHER LODE

CHAMBER OF MINES OF EASTERN BRITISH COLUMBIA

A non-profit bureau of information providing authentic, reliable data to the
General public and the mining industry of Eastern British Columbia
215 Hall Street, Nelson, B.C. V1L 5X4 Phone: (250) 352-5242
chamberofmines@netidea.com

NEWSLETTER

Note: The views of contributors to this newsletter do not necessarily reflect the views of the Chamber

***Chamber of Mines of Eastern BC Hours
Monday - Friday from 10am – 3pm***

Come join us at the Castlegar Gem, Fossil, Mineral Show & Sale

Hosted by
The Kokanee Rock Club & Selkirk Rock Club

KOOTENAY GEM, MINERAL, FOSSIL SHOW & SALE

Sunfest Weekend, June 3 & 4, 2023

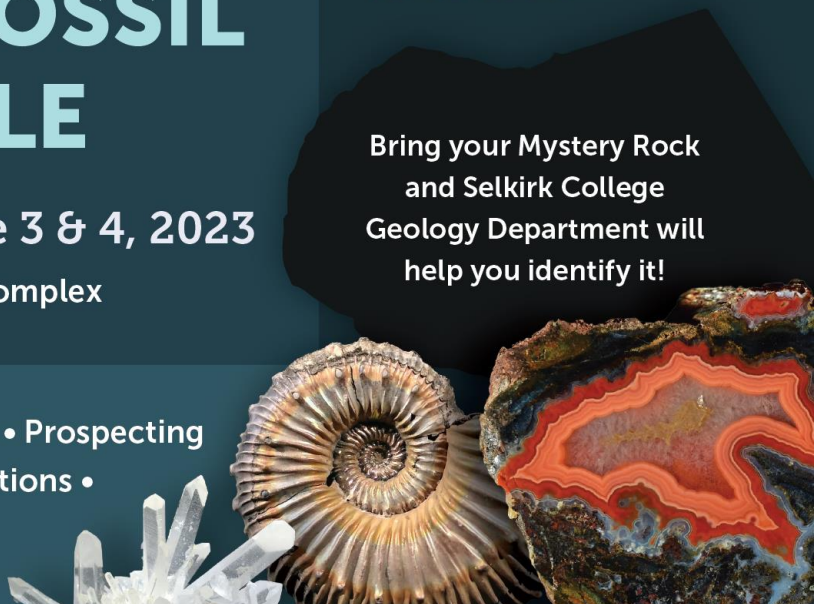
Castlegar & District Community Complex

Sat, June 3, 10am–5pm
Sun, June 4, 10am–4pm

Adults: \$5
Youth 6–12: \$2
Under 6: Free

Bring your Mystery Rock
and Selkirk College
Geology Department will
help you identify it!

Gems • Crystals • Fossils • Jewelry • Prospecting
Equipment • Displays • Demonstrations •
Lapidary Supplies • Gold Panning



The Chamber will have a local specimen table in the Education Room!



May 31st, 2023

Taranis Demands BC Government Action on Permit Application

Taranis Resources Inc. has had its legal counsel write to the Honourable Josie Osborne, BC Minister of Energy, Mines and Low Carbon Innovation, (“EMLI”) demanding action on an exploration permit application that was submitted to the Cranbrook regional office nearly a year ago.

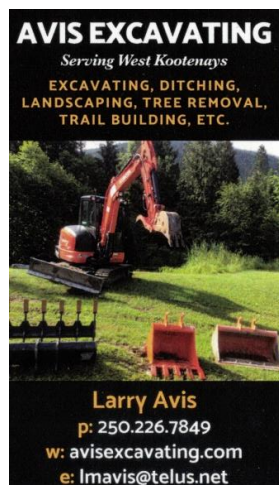
The permit application addresses a number of drill sites and roads that must be constructed at the Thor project in order to test for the presence of a large intrusive target, which was outlined by an airborne geophysical survey in early May of 2022.

In a joint announcement with the Association for Mineral Exploration British Columbia on August 15, 2022, EMLI committed to improvements in processing of such applications. Yet despite these promises, Taranis’ application remains outstanding.

“Taranis has made every reasonable effort to engage in good faith and be responsive. Now we call upon the Minister to ensure appropriate action is taken by the ministry staff,” said President and CEO John Gardiner. “The Supreme Court of Canada has been clear that the Crown’s duty to consult does not provide a veto, and government must respect third parties rights as well as Indigenous interests.”

Mr. Gardiner added, “We have many US investors that are watching this matter closely, and we urge the government to take steps that enhance investor confidence in British Columbia.”

A copy of the letter to Minister Osborne is available on the Taranis website at www.taranisresources.com





Chamber of Mines' Letter of Endorsement for W.H.Y Resources' Rossland Magnesium Project

Dear Ministry of Mines, Energy and Low Carbon Initiative,

On behalf of the Chamber of Mines of Eastern BC, I am writing to express our enthusiastic endorsement of the Why Resources Magnesium Mine in Rossland, BC, and to encourage your support for this important project.

As you are aware, minerals are an essential component of our daily lives, from the steel in our cars and buildings to the batteries in our smartphones and laptops. But beyond their everyday uses, minerals are also critical to the transition to a greener, more sustainable future. From wind turbines to solar panels to electric vehicles, the development and deployment of clean energy technologies relies on the availability of a wide range of minerals.

The Why Resources Magnesium Mine has the potential to make a significant contribution to this transition, by providing a reliable, domestic source of magnesium, a key component in lightweight alloys used in the automotive and aerospace industries. The mine is also expected to create hundreds of high-paying jobs, both directly and indirectly, and generate significant economic benefits for local communities and the provincial government.

We are also confident that Why Resources is committed to responsible and sustainable development, including meaningful consultation with First Nations communities and robust environmental, social, and governance (ESG) practices. We believe that this project can be developed in a way that respects the rights and interests of all stakeholders, while also contributing to a more sustainable, low-carbon future.

In conclusion, we urge you to consider the many benefits of the Why Resources Magnesium Mine and to support its responsible development.

Thank you for your attention to this important matter.

Kind Regards,

David A. Johnston - President CMEBC



Grizzly Adds to Greenwood, BC Project with Additional Staking of Beaverdell Properties

Grizzly Discoveries Inc. is pleased to announce that it has acquired by staking additional lands of 6,600 acres in eleven mineral claims in the Beaverdell area bringing its 100% owned total land package to 8,520 acres in the Beaverdell area in the Greenwood Mining District of British Columbia (BC).

Beaverdell Property

The Company now has a 100% undivided interest in thirteen mineral claims totaling 8,520 acres, known as the Beaverdell Claims, near the town of Beaverdell in southeast BC, adjacent to the Company's Greenwood Project mineral claims.

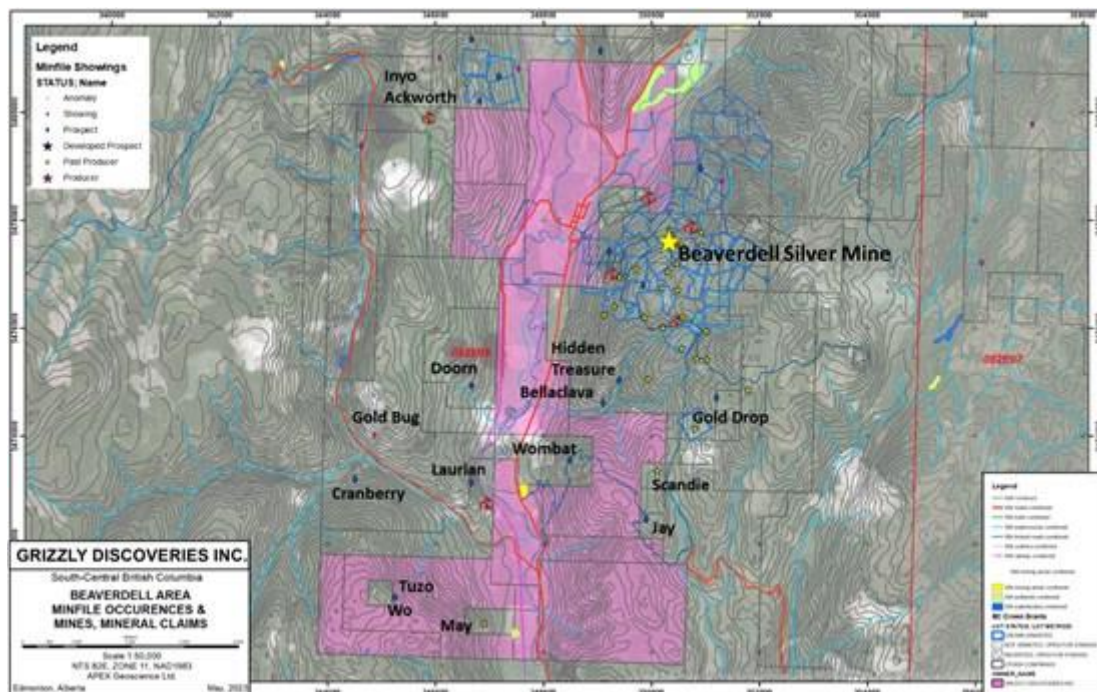


Figure 1: Beaverdell Mineral Claims, BC Minfile Occurrences and Past Producers.

To view an enhanced version of this graphic, please visit:

https://images.newsfilecorp.com/files/4488/167262_87457b99a49e1a6c_002full.jpg

The Beaverdell mineral claims exist surrounding the town of Beaverdell and the historic Beaverdell silver-lead-zinc-gold (Ag-Pb-Zn-Au) camp shown in Figure 1. Silver production for the main Beaverdell Silver Mine was close to 35 million ounces (Moz) of Ag with greater than 30 million pounds (Mlbs) of Zn and 25 Mlbs of Pb from 1896 to 1991 (BC Government Minfile Report for 082ESW030). The Company's Beaverdell claims exist to the northwest, west and southwest of the historic Beaverdell Silver Mine (Figure 1). Several of the recently acquired mineral claims exist immediately south of Troubadour Resources Inc.'s Texas

Project mineral claims where they have been actively exploring high grade Ag-Au-Cu-Pb-Zn zones southwest of Beaverdell including the Doorn Zone and the Wombat Zone (Figures 1 and 2).

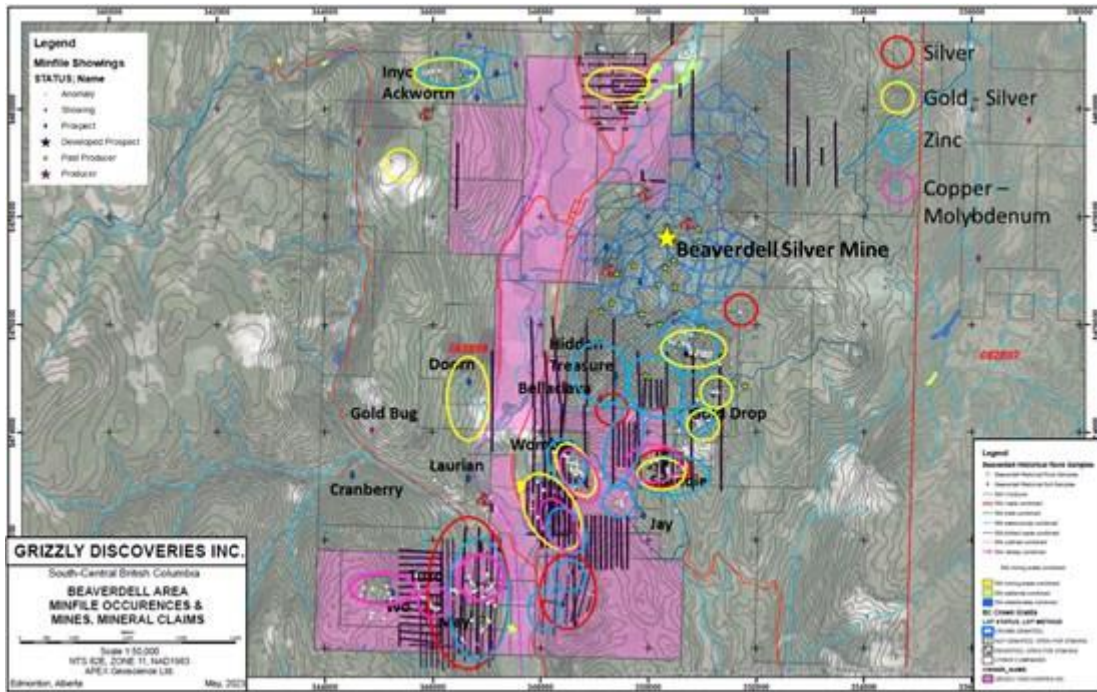
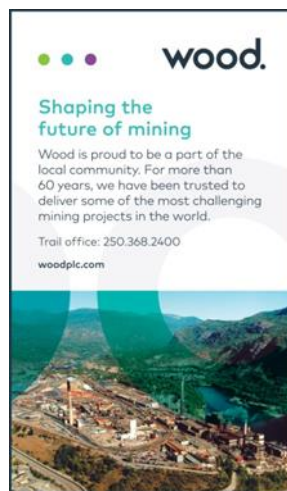


Figure 2: Grizzly Beaverdell Mineral Claims and Historical Geochemical Sampling and Anomalies.

To view an enhanced version of this graphic, please visit:

https://images.newsfilecorp.com/files/4488/167262_87457b99a49e1a6c_003full.jpg



The Beaverdell mineral claims cover a number of historical polymetallic showings and based upon a compilation of historical assessment data, a number of rock and soil anomalies with highly anomalous Ag, Au, Zn, Pb and Cu (Figure 2).

In addition to the various Ag-Au-Zn-Pb anomalies there are a number of Cu +/- Mo anomalies in the southern half of the claim block, in particular the Tuzo Creek Molybdenite showing with accompanying sphalerite, galena and chalcopyrite in an altered, partially brecciated and quartz veined Eocene aged quartz-feldspar porphyry. Historical drilling results at the Tuzo Creek showing have yielded up to 0.28% MoS₂ (0.17% Mo) over 3.05 m and 0.16% MoS₂ (0.1% Mo) over 15.24 m core length in limited drilling.

Compilation of historical soil samples collected from mostly on or near the Company's lands include approximately 7,020 soil samples with 437 samples yielding a range of 1 part per million (ppm) Ag up to 15.1 ppm Ag, a total of 111 soil samples yielding a range of 100 parts per billion (ppb) Au up to 1,090 ppb Au, a total of 420 soil samples yielding a range of 500 ppm Zn up to 6,400 ppm Zn and a total of 55 soil samples yielding a range of 200 ppm Cu up to 1,850 ppm Cu (Figure 2).

Compilation of historical rock samples collected from mostly on or near the Company's lands include approximately 365 samples with 79 rock samples yielding a range of 10 ppm Ag up to 6,257 ppm Ag, a total of 54 rock samples yielding a range of 1 ppm Au up to 78.73 ppm Au, a total of 92 rock samples yielding a range of 1,000 ppm Zn up to 316,000 ppm (31.6%) Zn and a total of 26 rock samples yielding a range of 1,000 ppm Cu up to 70,000 ppm (7.0%) Cu (Figure 2).

The Company plans to conduct reconnaissance exploration, including prospecting, rock and soil sampling along with geological mapping at the acquired mineral claims during the coming field season. Brian Testo, President and CEO of Grizzly Discoveries, stated, "The addition of an expanded package of Beaverdell claims is a very good acquisition for Grizzly Discoveries. It enhances our 100% owned battery metals properties in the Greenwood Mining District. We look forward to the upcoming field season with a prospecting team dedicated to discovering new showings and the drilling of these new showings."

<https://www.grizzlydiscoveries.com/>




Chamber report by Brad Gretchev:

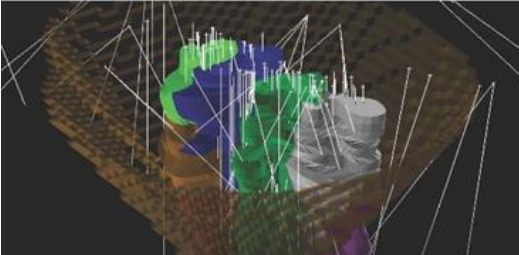
Come and explore the fascinating world of mineral exploration at the Chamber of Mines of Eastern BC Research Center and Mineral Museum. Located in Nelson British Columbia, our center offers a wealth of resources and assistance to those passionate about minerals and exploration.

In May alone, we successfully conducted the 2023 Basic Prospecting Course, empowering 13 enthusiastic students with valuable knowledge. We also welcomed visits from Brent Kennedy Elementary School and the Homeschoolers of SD.8, spreading awareness and igniting curiosity among young minds.

We are thrilled to announce that we will be hosting a table showcasing local mineral specimens at the upcoming Castlegar Gem, Fossil, Mineral Show & Sale in Castlegar, BC on Saturday, June 3rd, and Sunday, June 4th, 2023. Join us for an unforgettable experience, where you can learn, discover, and connect with the captivating world of minerals.



AKF
MINING SERVICES INC.



AKF MINING SERVICES INC.
Adding Value to your Mineral Resource

- Geological Modeling • Grade Estimation
- Mine Design and Planning • Pit Optimizations
- Ore Resource/Reserve Evaluations
- High Level Reviews • Scoping Studies

PEA, 43-101, S-K 1300, JORC

info@akfmining.com • Vancouver, BC, Canada
www.akfmining.com

2023 Basic Prospecting Course Pictures













May 31st, 2023

Kenville Gold Mine Activity Update — Historic gold Mining District, Nelson BC

Ximen Mining Corp. is pleased to provide an update on activities at its Kenville Gold Mine project in southeastern BC.



The Company has received its final permits under the Mines Act and Environmental Management Act and is now commencing engineering and other technical studies to meet conditions specified in the permits that are required prior to starting mine development. Current activities include:

- Hydrogeological assessment and selection of sites for two ground water monitoring wells (the wells will be drilled once the selected sites are approved)
- Commissioned engineering design of contact water capture and conveyance for area of new portal and rock dump
 - Initial engineering review and assessment of drainage channel
 - Filed application for explosives storage and use permit (site inspection to be arranged)
- Initiated mine engineering detailed design drawings for mine excavations including drill cut-outs, re-muck cut-outs, safety bays and sumps
 - On-going water flow monitoring

MINING: GOOD NEIGHBOUR AND PROVIDER TO THE WORLD

WWW.CMEBC.COM



Kootenay River Dam – Power Source for the Development of the Kenville Gold Mine

The engineering and environmental works are required to be completed and approved prior to starting underground mine development. The Company is addressing these items concurrently in anticipation of starting underground as soon as possible.

<https://www.ximenminingcorp.com/>



MINING: GOOD NEIGHBOUR AND PROVIDER TO THE WORLD
WWW.CMEBC.COM



Rokmaster Preparing for Drilling at Revel Ridge

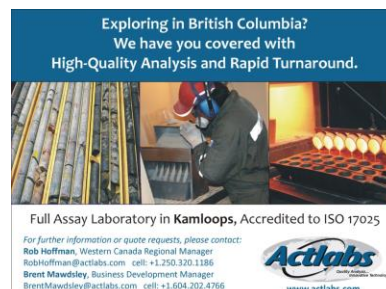
Rokmaster Resources Corp. is pleased to announce work has commenced in preparation for its upcoming diamond drill program (see News Release dated April 12, 2023) on Rokmaster’s Revel Ridge Project (“Revel Ridge”).

Crews have arrived on site and are busy preparing the access road and site infrastructure. The initial drillhole will target down-dip of the 2022 channel sampling on the southeastern extension of the Revel Ridge Main Zone (“RRMZ”). Additional targets which aim to expand the RRMZ on the northwestern extension will be tested in the near future.

John Mirko, President and CEO, comments:

“The Rokmaster team and all of our fantastic contractors are glad to return to the Revel Ridge Project for another drill campaign. The Revel Ridge Project has always positively advanced between the time of a drill arriving and leaving the Project. The updates to the MRE and the PEA are being thoroughly developed and the Company will release the results as soon as available.”

<https://rokmaster.com/>



**WE RELY ON THE SUPPORT OF OUR MEMBERS.
PLEASE REMEMBER TO RENEW YOUR MEMBERSHIP.**



215 HALL STREET NELSON, BC V1L 5X4
PHONE (250) 352-5242

Membership Application form for the Year 2023

YOUR SUPPORT IS ESSENTIAL TO THE LIFE OF THE CHAMBER
PLEASE COMPLETE SO THAT WE CAN UPDATE OUR FILES.

NAME: _____ COMPANY _____

STREET ADDRESS: _____

CITY/PROVINCE/POSTAL CODE: _____

PHONE: AREA CODE: _____ PHONE: _____ FAX: _____

Email: _____

*We can now accept Credit Card payments by using the Donate Button on our website.
www.cmebc.com*

Or send us an interact email money transfer to chamberofmines@netidea.com

INDIVIDUAL MEMBERSHIP \$ 40.00 _____

SMALL CORP MEMBERSHIP (2-10 EMPLOYEES) \$100.00 _____

SMALL CORP MEMBERSHIP (11-30 EMPLOYEES) \$200.00 _____

MEDIUM CORP MEMBERSHIP (31-50 EMPLOYEES) \$300.00 _____

LARGE CORP MEMBERSHIP (51+ EMPLOYEES) \$500.00 _____

Date..... \$ _____

THANKS FOR YOUR SUPPORT ----- Chamber of Mines of Eastern BC
MINING: GOOD NEIGHBOUR AND PROVIDER TO THE WORLD
WWW.CMEBC.COM