



MOTHER LODE

CHAMBER OF MINES OF EASTERN BRITISH COLUMBIA

A non-profit bureau of information providing authentic, reliable data to the
General public and the mining industry of Eastern British Columbia

215 Hall Street, Nelson, B.C. V1L 5X4 Phone: (250) 352-5242

chamberofmines@netidea.com

NEWSLETTER

Note: The views of contributors to this newsletter do not necessarily reflect the views of the Chamber

***Chamber of Mines of Eastern BC Hours
Monday, Wednesday and Friday from 10am – 3pm***

The Chamber held its Annual General Meeting on February 18th, 2021.
Thank you to all of the Directors that have stayed on and continue to volunteer their time to keep the Chamber's doors open to the public.

2021 Directors.

David A. Johnston – President

Jarrold Brown

Bernie Augsten

Gerald York

Ted Nunn – Vice President

Tom Cherry

Emily Laycock

Tyler Rice

Dicky Niessen – Treasurer

David W. Johnston

Peter Niessen

Brad Gretchev

We wish everyone the best of luck with their 2021 exploration projects and we are happy to help with any questions or concerns you may have.

Check out GeoscienceBC year in review below.

[A Year in Review: Geoscience BC Minerals Projects in 2020 - Geoscience BC](#)

A great infographic on Canadian investment in exploration and mining projects for 2020 from NRCAN

https://www.nrcan.gc.ca/sites/www.nrcan.gc.ca/files/pdf/Canadian%20Mineral%20Exploration_E_access.pdf

MINING: GOOD NEIGHBOUR AND PROVIDER TO THE WORLD

WWW.CMEBC.COM



February 12th, 2021

Ximen's 2020 Prospecting Program

**9.04 G/T Gold, 72.8 G/T Silver & 1.27% Copper at
The Venus Showing, Nelson BC**

Ximen Mining Corp. is pleased to announce results from prospecting samples collected at its properties near the Kenville Gold Mine, Nelson, British Columbia.

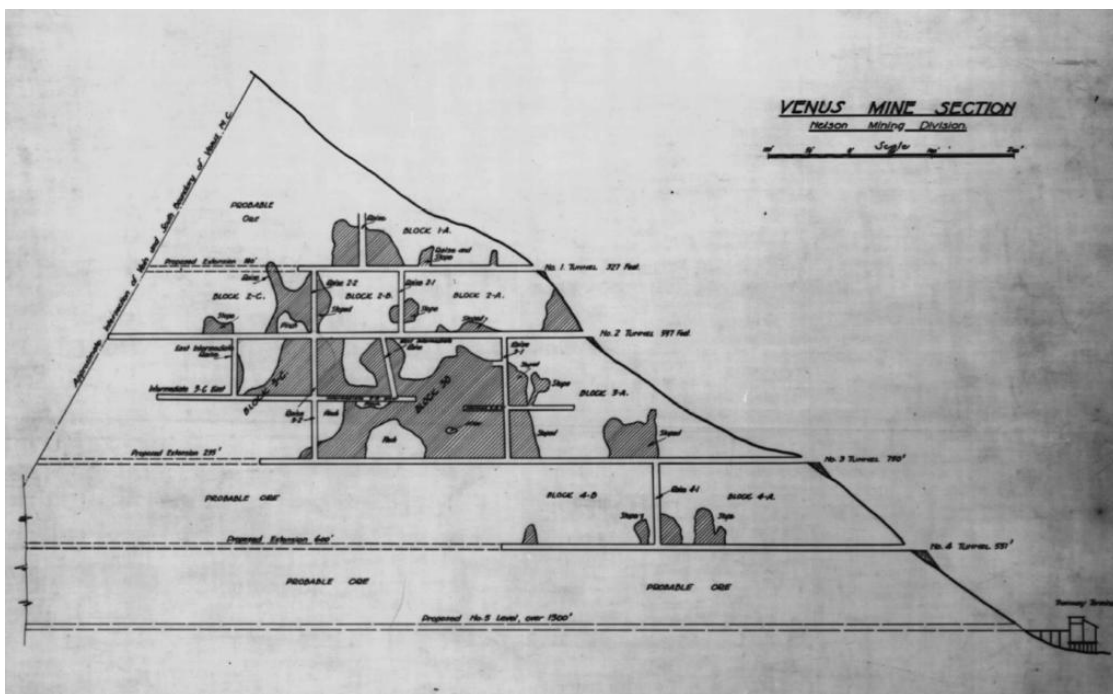


Image of historic Venus mine longitudinal section showing mine levels and areas mined.

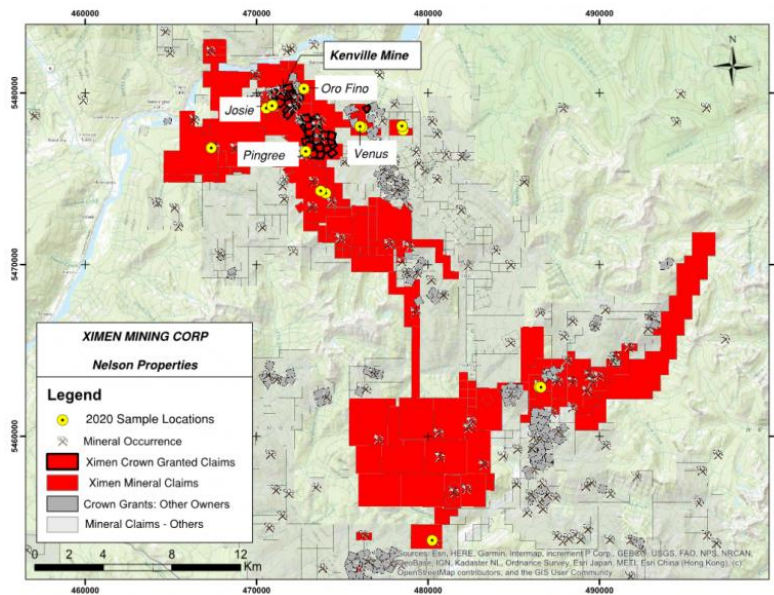
AVIS EXCAVATING
Serving West Kootenays
EXCAVATING, DITCHING,
LANDSCAPING, TREE REMOVAL,
TRAIL BUILDING, ETC.

Larry Avis
p: 250.226.7849
w: avisexcavating.com
e: lmavis@telus.net

MINING: GOOD NEIGHBOUR AND PROVIDER TO THE WORLD
WWW.CMEBC.COM

Analytical results were received recently from rock samples collected last season on claims surrounding the company’s Kenville Mine near Nelson, BC. Approximately one week was spent examining the main showings in the Nelson area and a total of 18 rock chip grab samples were collected. Results were obtained for 9 samples to date, four of which returned significant gold results, with two also significant in copper and silver (see table below).

Gold (g/t)	Silver (g/t)	Copper %	Nearby Showing	Rock Type	Sample
9.04	72.8	1.27	Venus	Quartz Vein Float	D0004152
8.81	0.26	N/A	Oro Fino	Quartz Vein Float	D0004162
3.99	1.88	N/A	Pingree	Quartz Vein Float	D0004155
1.76	41	1.01	Josie	Quartz Vein Outcrop	D0004154



The highest value was obtained from the Venus showing. Between 1900 and 1941 the historic Venus and Juno mines produced 3,444 ounces gold, 3,070 ounces silver plus minor lead and copper from 5,411 tonnes mined. Calculated grades are 19.8 grams per tonne gold and 17.6 grams per tonnes silver. Quartz veins are mineralized with pyrite and minor galena and sphalerite. The veins vary from a few centimetres to over 1 metre in width and locally occur as quartz stringers in sheared rock. Two main veins were mined; the Venus vein and the Juno vein, which is oriented almost at right angles to the Venus vein.





Photo of quartz float at Oro Fino prospect.

The Oro Fino is located just over 1 km east of the Kenville mine and the mineralization at Oro Fino is similar to that at the Kenville mine. A 0.15-metre-wide vein is documented on the reverted Evening Star crown grant that has the same attitude as the Kenville veins, indicating that the Kenville vein system possibly continues onto the Oro Fino property. The 2020 sample was collected from quartz float near a pit on the reverted Evening Star crown grant (see photo above).



**Providing
environmental and
engineering solutions
across the full mining
life cycle**

Contact: Michelle Marshall
Environmental Project Manager, Mining
Nelson, BC | (236) 858-3421
Michelle.Marshall@stantec.com

Design with community in mind stantec.com



Photo looking south at quartz vein outcrop showing malachite staining.

Vein is mineralized with pyrite and chalcopyrite, from the Josie showing about 1.5 km southwest of the Kenville Gold Mine.

The Pingree showing is situated near the headwaters of Eagle Creek, southwest of the Eureka mine, and 3.8 km south of the Kenville mine. The Pingree showing is documented as a 0.3 to 1.2-metre-wide quartz vein. Quartz float was sampled in 2020.

The Josie showing is situated about 1 km southwest of the Kenville mine. An east-west–striking quartz vein approximately 10 metres in width, hosted by pseudodiorite and mineralized with chalcopyrite is documented in the BC Minfile. The Minister of Mines Annual Report for 1899 records an assay from this property as 5 per cent copper, 240 grams per tonne silver and 15 grams per tonne gold. The 2020 sample was collected from a quartz vein 0.15 meters thick that strikes 040 and dips 40 southeast.

Results for the remaining 9 samples are pending. In the meantime, Ximen will apply for permits for exploration on the properties surrounding the Kenville mine. Planned activities will include geological and geochemical surveys, ground geophysics, trenching and surface diamond drilling.

Ximen is proceeding with its plan to develop the Kenville mine, with permitting for new underground mine development expected to be finalized this spring.

<https://www.ximenminingcorp.com/>

February 11th, 2021

Rokmaster Drills Strong Gold Mineralization of 21.65 g/t AuEq over 1.95 Metres, within a larger envelope of 11.02 g/t AuEq over 3.95 Metres, and Confirms Main Zone Gold Mineralization over 595 Vertical Metres

Rokmaster Resources Corp. is pleased to present further assay results from diamond drill holes RR20-01 – RR20-11 from its ongoing drill program at the Revel Ridge polymetallic gold-silver Project (“Revel Ridge” or the “Project”) which demonstrate the remarkable continuity of structurally controlled gold mineralization in the Revel Ridge Main Zone (“RRMZ”) and the parallel Footwall Zone (“RRFZ”), and significant silver grades in the Yellowjacket Zone (“RRYZ”).

Rokmaster has currently completed 27 diamond drill holes in the 2020 and 2021 programs, totalling 9,304 m of NQ sized drill core. The plan map illustrating the collar locations of all of the drillholes collared to date in the 2020 and 2021 programs is presented on the digital link [Figure 1. Plan View Collar Locations](#), and the location of all drillholes completed in 2020 and 2021 are illustrated on the block model presented on the digital link [Figure 2. Main Zone Block Model](#), also available at www.rokmaster.com.

Drilling Highlights:

RRMZ Intervals

- **RR20-07**
 - **7.23 g/t gold equivalent (“AuEq”) over 3.3 m**
- **RR20-09**
- **11.02 g/t AuEq over 3.95 m,**
- **including: 21.65 g/t AuEq over 1.95 m**
- **and: 26.73 g/t AuEq over 1.15 m**

RRYZ Intervals

- **RR20-04**
 - **580 g/t silver equivalent (“AgEq”) over 2.9 m,**
 - **and: 296 g/t AgEq over 4.26 m**
- **RR20-07**
- **721 g/t AgEq over 2.63 m**

Out of the 11 drillholes (RR20-01 to RR20-11) for which all assays have been received to date, 8 of the 11 boreholes intersected gold equivalent grades and widths which would be included in an inferred resource calculation using the parameters described in the December 2020 Preliminary Economic Assessment (“PEA”) study (Rokmaster news release dated December 8, 2020). Assay results of one of these drillholes, DDH RR20-11, has been previously released (Rokmaster news release dated December 11, 2020).

1. The 2020 and ongoing 2021 drill programs have intersected the RRMZ mineralization from an elevation of 936 m up to 341 m. Using this and historical data, Rokmaster has shown that the RRMZ mineralization demonstrates remarkable continuity over a vertical distance of 595 m and has successfully been drilled along strike for 1,025 m. Within the approximate 55-degree dipping plane of mineralization, significant gold mineralization has been demonstrated over down-dip distances of 745 m.
2. Within the RRMZ, the mineralogic, alteration and structural signatures of well-mineralized rock at shallowest elevation datums are virtually identical to the mineralogic, alteration and structural vectors at deepest elevation datums. Mineralization within the RRMZ remains open in virtually all strike and dip directions. Currently, successful RRMZ intersections have been obtained 250 m external to the inferred resource volumes documented in the December 8, 2020 PEA.
3. Drillholes RR20-01, 02 and 08 all had variable gold mineralization but those results fell below the threshold used for inclusion in this news release. The threshold used for inclusion in this news release is approximately 2.5 g/t AuEq over greater than 2.0 m.
4. In addition to the RRMZ, significant results were intersected in the silver-rich RRYZ and the gold bearing RRFZ.

The results from drillholes RR20-03, 04, 05, 06, 07, 09 and 10 are presented in Table 1.



Table 1. Summary of the Selected Assay Results of Revel Ridge Main Zone Mineralization

DDH	From (m)	To (m)	Length (m)	Au g/t	Ag g/t	Pb %	Zn %	Zone	AuEq g/t	AgEq g/t
RR20-03	227.12	230.55	3.43	0.82	107.4	7.9	0.3	RRMZ	5.53	--
<i>including</i>	228.75	230.55	1.8	1.5	158.4	13.9	0.6	RRMZ	9.41	--
and	239.8	242.5	2.7	2.3	7.3	0.5	1	RRFZ	3.06	--
RR20-04	118.95	121.85	2.9	0.17	68	2	12.3	RRYJ	--	580
<i>including</i>	118.95	124.75	5.8	0.09	35.5	1.1	6.5	RRYJ	--	307
and	168.8	173.06	4.26	0.12	47.2	2.4	4.7	RRYJ	--	296
<i>including</i>	171.3	173.06	1.76	0.21	70.5	3	10.5	RRYJ	--	551
and	217.13	221.55	4.42	2.74	5.8	0.2	0.6	RRMZ	3.18	--
<i>including</i>	220.55	221.55	1	9.51	16	0.8	2.2	RRMZ	11.07	--
RR20-05	306.95	312.55	5.6	1.71	9.5	0.4	0.7	RRMZ	2.32	--
<i>including</i>	306.95	308.25	1.3	4.16	21.7	1	1.1	RRMZ	5.36	--
RR20-06	305.38	306.4	1.02	5.41	54	2.8	3.8	RRMZ	9.02	--
RR20-07	261.5	264.13	2.63	0.12	67.1	3.3	15.3	RRYJ	--	721
<i>including</i>	262.54	264.13	1.59	0.19	109	5.3	25.2	RRYJ	--	1182
and	307.26	321.55	14.29	1.12	31.3	1.4	2	RRMZ	3.03	--
<i>including</i>	307.26	308.75	1.49	0.51	74.4	4.1	5.2	RRYJ	5.56	423
<i>and including</i>	310.16	317.3	7.14	1.66	45.5	1.9	2.8	RRMZ	4.33	--
<i>including</i>	314	317.3	3.3	3.05	78.9	3.3	3.9	RRMZ	7.23	--
RR20-09	267.1	272	4.9	0.66	72	3.4	1.9	RRYJ	--	293
and	297.65	301.6	3.95	5.28	119.1	4.7	4.9	RRMZ	11.02	--
<i>including</i>	298.65	300.6	1.95	10.48	234.5	9.2	9.4	RRMZ	21.65	--
<i>including</i>	299.45	300.6	1.15	14.57	231	10.4	10.6	RRMZ	26.73	--
RR20-10	253.35	255.55	2.2	5.39	41.6	2.1	5.2	RRMZ	9.21	--

Reported widths of mineralization are drill hole intervals or core length recovered. Insufficient data exists to permit the calculation of true widths of the reported mineralized intervals.

www.rokmaster.com.



MINING: GOOD NEIGHBOUR AND PROVIDER TO THE WORLD

WWW.CMEBC.COM

Chamber report by Brad Gretchev:

Although we are still in a pandemic the Chamber has been steadily busy with people coming into the Chamber to learn about minerals and prospecting.

It is a great time to take up exploring our area and to get out of the house to find minerals that interest and inspire you.

It is great exercise as well! Go for a walk, pick up a rock that intrigues you and bring it to the Chamber for identification. You never know, you could find something valuable that someone else has missed.

We had a great Zoom meeting with the Gold Commissionaire, Mark Messmer.


Some highlights from the meeting.

- As of now the protection status that is applied to all claims will not be extended passed the December 31, 2021 date. If there is a change and an extension order is placed an email will be sent to all title holders with the new protection date.
- A mass email will be sent to title holders to remind them to file their reports.
- If you have applied for a permit and you don't receive it in time to complete your exploration/work program for the season please contact Mark Messmer and he will review your case and an extension of your good to date can be granted upon approval.
- If you have a "mineral claim" and are using panning as a means to sample material for the presence of valuable minerals you are allowed to claim the work on your physical work report. Mineral Titles would like you to state that you used panning and elaborate on what you found in the additional information section of your physical work report.

Remember that we are here to advocate for you and liaise with members of Government so if you have questions or concerns please let us know and we will do everything possible to help you.

Your memberships and donations are what keep the Chamber going so please renew or consider supporting us with a donation. All the best for 2021!!

Exploring in British Columbia?
We have you covered with
High-Quality Analysis and Rapid Turnaround.



Full Assay Laboratory in Kamloops, Accredited to ISO 17025

For further information or quote requests, please contact:
Rob Hoffman, Western Canada Regional Manager
RobHoffman@actlabs.com cell: +1.250.320.1186
Brent Mawdsley, Business Development Manager
BrentMawdsley@actlabs.com cell: +1.604.202.4756

Actlabs
www.actlabs.com

GRIZZLY DISCOVERIES INC.

February 1st, 2021

Grizzly Completes VTEM Geophysical Survey At Its Robocop Cobalt-Copper-Silver Property In Southeastern British Columbia, Canada

Grizzly Discoveries Inc. is pleased to announce that Geotech Ltd. has completed the Company's approximately 400 line km Versatile Time Domain Electromagnetic ("VTEM™") and magnetic survey over its 100% owned, road accessible Robocop Property in Southeast British Columbia (the "Property"), near the hamlets of Grasmere and Roosville. The VTEM™ survey was flown at 100 metre spacing and, following interpretation, the data will provide the first property-wide, high resolution geophysical images of the Property. An initial review of preliminary data indicates the presence of a number of EM (conductive) and magnetic anomalies that will require follow-up review and exploration.

The survey is the first of many modern exploration techniques that will be used to explore and develop the Robocop Cobalt (Co)-Copper (Cu)-Silver (Ag) Project. The VTEM™ dataset will help to better define the geological model of the Property and to target conductive portions of the assemblage, potentially those associated with both stratigraphic and vertical structural anomalies, particularly those that might be associated with sulphide minerals and Co-Cu-Ag mineralization, in advance of a planned summer 2021 drilling campaign.

The property is hosted within a similar geological setting to the Idaho Cobalt-Copper belt where conductivity (EM) and magnetic surveying techniques have been used previously to successfully guide drilling of prospective targets and assist in making new metal discoveries.

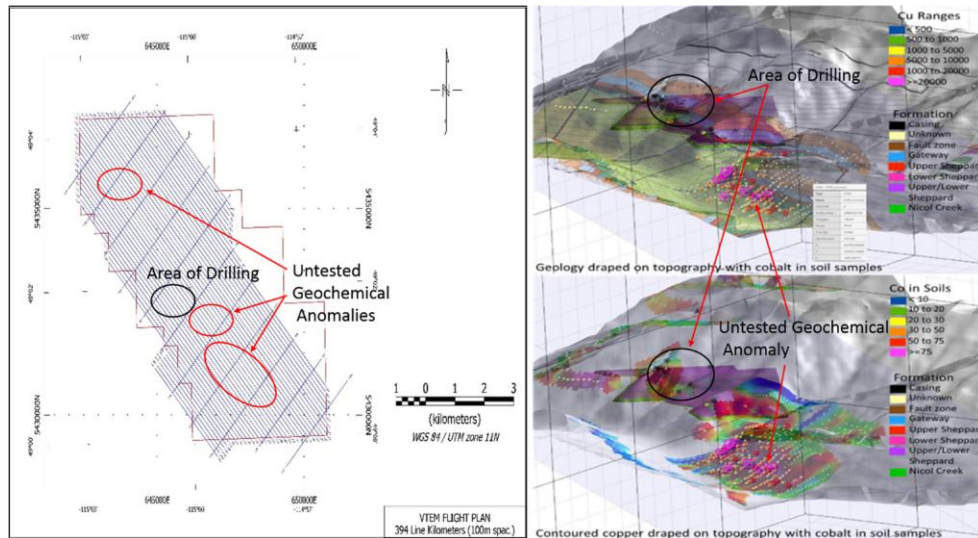
HIGHLIGHTS FOR THE ROBOCOP PROPERTY

- The Robocop Project is comprised of 6,850 acres (2,770 ha) in five mineral claims that are all road accessible, just off Provincial Highway 93 in southeast B.C.
- Initial surface trenching in the late 1980's to early 1990's yielded up to **0.06% Co** and **1.93% Cu** over **6 metres (m)** in one trench, and in a separate trench up to **0.146% Co**, **1.8% Cu** and **5.3 grams per tonne (g/t) Ag** over **5 m** in sediment-hosted sulphide mineralization within middle Proterozoic Purcell Group rocks (Thomson, 1990).
- A total of 15 drill holes in the area between 1990 and 2008 have yielded several intersections of near surface Co-Cu-Ag mineralization with grades of up to **0.134% Co**, **1.19% Cu** and **33.8 g/t Ag** over **1.23 m** core length in hole R-1990-5 and **0.14% Co**, **0.9% Cu** and **2.7 g/t Ag** over **3.1 m** core length in hole R-1990-6 (Thomson, 1990), along with an intersection of **0.18% Co**, **0.28% Cu** and **4.1 g/t Ag** over **1 m** core length in hole R-2008-02 (Pighin, 2009).

MINING: GOOD NEIGHBOUR AND PROVIDER TO THE WORLD

WWW.CMEBC.COM

- All but one of the historical drillholes tested a single target in an area about 500 m by 350 m. The Property is approximately 10 km in length and 3.5 km in width and contains at least 4 untested anomalous soil +/- rock geochemical targets (see figure below).
- Sediment hosted Co-Cu-Ag mineralization is similar in style, age and host rocks to mineralization at Jervois Mining Ltd.'s Idaho Cobalt project and Hecla's Revett Formation hosted mineralization near Troy, Montana.



The Property has yielded significant historical cobalt, copper and silver results and presents an opportunity to discover battery and electrification metals as the world shifts to electric vehicles, sustainable practices and greener alternatives. The macroeconomic outlook for battery metals such as Co and Cu remains strong with the ongoing shift to electric vehicles. It is estimated that the battery sector accounts for approximately 57% of current Co demand; this is expected to grow over the next five years to 72% and will require an additional 100,000 tonnes/annum of Cobalt to meet demand.



**WE RELY ON THE SUPPORT OF OUR MEMBERS.
PLEASE REMEMBER TO RENEW YOUR MEMBERSHIP.**



215 HALL STREET NELSON, BC V1L 5X4
PHONE (250) 352-5242

Membership Application form for the Year 2021

YOUR SUPPORT IS ESSENTIAL TO THE LIFE OF THE CHAMBER
PLEASE COMPLETE SO THAT WE CAN UPDATE OUR FILES.

NAME: _____ COMPANY _____

STREET ADDRESS: _____

CITY/PROVINCE/POSTAL CODE: _____

PHONE: AREA CODE: _____ PHONE: _____ FAX: _____

Email: _____

*We can now accept Credit Card payments by using the Donate Button on our website.
www.cmebc.com*

Or send us an interact email money transfer to chamberofmines@netidea.com

- INDIVIDUAL MEMBERSHIP \$ 40.00 _____
- SMALL CORP MEMBERSHIP (2-10 EMPLOYEES) \$100.00 _____
- SMALL CORP MEMBERSHIP (11-30 EMPLOYEES) \$200.00 _____
- MEDIUM CORP MEMBERSHIP (31-50 EMPLOYEES) \$300.00 _____
- LARGE CORP MEMBERSHIP (51+ EMPLOYEES) \$500.00 _____
- Date..... \$ _____

THANKS FOR YOUR SUPPORT ----- Chamber of Mines of Eastern BC

MINING: GOOD NEIGHBOUR AND PROVIDER TO THE WORLD
WWW.CMEBC.COM